



BẦU LỆCH TÂM VI SINH TIÊU CHUẨN SMS

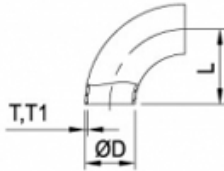
Tên Sản Phẩm
Hiệu
Kiểu Nối
Tiêu Chuẩn
Đặc Điểm Kỹ Thuật
Vật Liệu
Kích Thước
Sử Dụng
Tình Trạng

BẦU LỆCH TÂM VI SINH TIÊU CHUẨN SMS
CSE
Nối hàn
SMS
ASTM A269, A270
ASTM 304, 304L, 316L
DN38 x DN25 → DN104 x DN76
Công nghiệp vi sinh, hóa sinh, thực phẩm, dược, ...
Hàng có sẵn, mới 100%



SMS Pipe Line (mm)

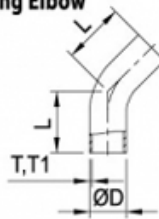
90° Short Elbow



SMS 90 B 90° Short Elbow

| DN | ØD | L | T | T1 |
|------|------|--------|------|-----|
| 25 | 25.0 | 37.5 | 1.25 | 1.5 |
| 38 | 38.0 | 57.0 | 1.25 | 1.5 |
| 51 | 51.0 | 76.5 | 1.25 | 1.5 |
| 63.5 | 63.5 | 95.25 | 1.5 | 1.5 |
| 76 | 76.1 | 114.15 | 1.6 | 2.0 |
| 104 | 104 | 152.1 | 2.0 | 2.0 |

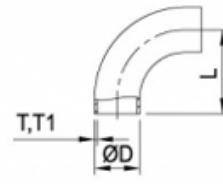
45° Long Elbow



SMS 45 LB 45° Long Elbow

| DN | ØD | L | T | T1 |
|------|------|-------|------|-----|
| 25 | 25.0 | 42.33 | 1.25 | 1.5 |
| 38 | 38.0 | 48.72 | 1.25 | 1.5 |
| 51 | 51.0 | 58.15 | 1.25 | 1.5 |
| 63.5 | 63.5 | 75.3 | 1.5 | 1.5 |
| 76 | 76.1 | 79.37 | 1.6 | 2.0 |
| 104 | 104 | 85.54 | 2.0 | 2.0 |

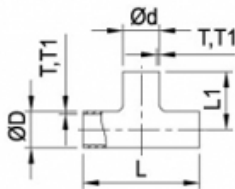
90° Long Elbow



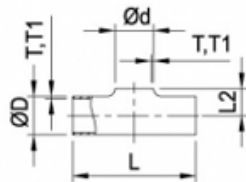
SMS 90 LB 90° Long Elbow

| DN | ØD | L | T | T1 |
|-------|-------|-----|------|-----|
| 25 | 25.0 | 55 | 1.25 | 1.5 |
| 38 | 38.0 | 70 | 1.25 | 1.5 |
| 51 | 51.0 | 82 | 1.25 | 1.5 |
| 63.5 | 63.5 | 105 | 1.5 | 1.5 |
| 76 | 76.0 | 110 | 1.6 | 2.0 |
| 101.6 | 101.6 | 150 | 2.0 | 2.0 |
| 104 | 104 | 150 | 2.0 | 2.0 |

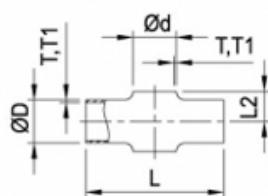
SMS ET Tee With Straight-End



SMS PT Tee Without Straight-End

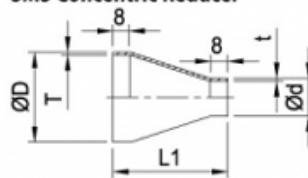


SMS PC Welding Cross Without Straight-End

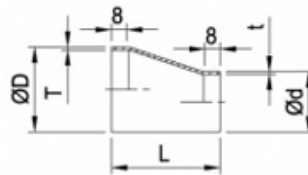


| DN | ØD | Ød | T | T1 | L | L1 | L2 |
|------|------|------|------|-----|-----|-----|------|
| 25 | 25.0 | 25.0 | 1.25 | 1.5 | 110 | 55 | 14.0 |
| 38 | 38.0 | 38.0 | 1.25 | 1.5 | 140 | 70 | 21.0 |
| 51 | 51.0 | 51.0 | 1.25 | 1.5 | 164 | 82 | 28.5 |
| 63.5 | 63.5 | 63.5 | 1.5 | 1.5 | 210 | 105 | 36.0 |
| 76.1 | 76.1 | 76.1 | 1.6 | 2.0 | 220 | 110 | 43.0 |
| 104 | 104 | 104 | 2.0 | 2.0 | 300 | 150 | 58.0 |

SMS CR SMS Concentric Reducer

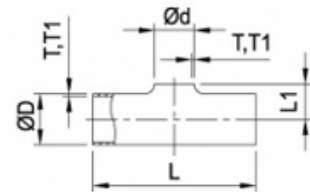


SMS ER SMS Eccentric Reducer



| SIZE | ØD | Ød | T | t | L1 | L |
|----------|------|------|------|------|-----|----|
| 38x25 | 38.0 | 25.0 | 1.25 | 1.25 | 46 | 39 |
| 51x25 | 51.0 | 25.0 | 1.25 | 1.25 | 68 | 57 |
| 51x38 | 51.0 | 38.0 | 1.25 | 1.25 | 47 | 39 |
| 63.5x25 | 63.5 | 25.0 | 1.5 | 1.25 | 92 | 74 |
| 63.5x38 | 63.5 | 38.0 | 1.5 | 1.25 | 70 | 57 |
| 63.5x51 | 63.5 | 51.0 | 1.5 | 1.25 | 44 | 39 |
| 76x25 | 76.1 | 25.0 | 1.6 | 1.25 | - | 92 |
| 76x38 | 76.1 | 38.0 | 1.6 | 1.25 | 92 | 74 |
| 76x51 | 76.1 | 51.0 | 1.6 | 1.25 | 68 | 57 |
| 76x63.5 | 76.1 | 63.5 | 1.6 | 1.50 | 47 | 39 |
| 104x51 | 104 | 51.0 | 2.0 | 1.25 | 117 | 95 |
| 104x63.5 | 104 | 63.5 | 2.0 | 1.50 | 94 | 78 |
| 104x76 | 104 | 76.1 | 2.0 | 1.60 | 74 | 60 |

SMS PRT Welding Reducing Tee Without Straight-End



| DN | ØD | Ød | T | T1 | L | L1 |
|-----------|------|------|------|-----|-----|------|
| 38x25 | 38.0 | 25.0 | 1.25 | 1.5 | 140 | 21.0 |
| 51x25 | 51.0 | 25.0 | 1.25 | 1.5 | 164 | 29.0 |
| 51x38 | 51.0 | 38.0 | 1.25 | 1.5 | 164 | 29.0 |
| 63.5x25 | 63.5 | 25.0 | 1.5 | 1.5 | 210 | 34.5 |
| 63.5x38 | 63.5 | 38.0 | 1.5 | 1.5 | 210 | 35.0 |
| 63.5x51 | 63.5 | 51.0 | 1.5 | 1.5 | 210 | 36.0 |
| 76.1x25 | 76.1 | 25.0 | 1.6 | 2.0 | 220 | 41.0 |
| 76.1x38 | 76.1 | 38.0 | 1.6 | 2.0 | 220 | 42.0 |
| 76.1x51 | 76.1 | 51.0 | 1.6 | 2.0 | 220 | 43.0 |
| 76.1x63.5 | 76.1 | 63.5 | 1.6 | 2.0 | 220 | 43.0 |
| 104x25 | 104 | 25.0 | 2.0 | 2.0 | 300 | 56.0 |
| 104x38 | 104 | 38.0 | 2.0 | 2.0 | 300 | 56.0 |
| 104x51 | 104 | 51.0 | 2.0 | 2.0 | 300 | 57.0 |
| 104x63.5 | 104 | 63.5 | 2.0 | 2.0 | 300 | 58.0 |
| 104x76.1 | 104 | 76.1 | 2.0 | 2.0 | 300 | 58.0 |

Sản phẩm khác



—

[VAN BƯỚC VI SINH TAY GẠT HÀN](#)

[Xem thêm VAN BƯỚC VI SINH TAY GẠT HÀN](#)



—

[VAN BƯỚC VI SINH INOX TAY RÚT NỐI HÀN TIÊU CHUẨN SMS](#)

[Xem thêm VAN BUỒM VI SINH INOX TAY RÚT NỐI HÀN TIÊU CHUẨN SMS](#)



—

[VAN BUỒM VI SINH INOX TAY RÚT NỐI HÀN TIÊU CHUẨN DIN](#)

[Xem thêm VAN BUỒM VI SINH INOX TAY RÚT NỐI HÀN TIÊU CHUẨN DIN](#)



—

[FERRULE VI SINH INOX 304/316 TIÊU CHUẨN DIN](#)

[Xem thêm FERRULE VI SINH INOX 304/316 TIÊU CHUẨN DIN](#)



—

[RẮC CO VI SINH INOX 304/316 TIÊU CHUẨN SMS](#)

[Xem thêm RẮC CO VI SINH INOX 304/316 TIÊU CHUẨN SMS](#)



—

[BẦU ĐỒNG TÂM VI SINH TIÊU CHUẨN DIN](#)

[Xem thêm BẦU ĐỒNG TÂM VI SINH TIÊU CHUẨN DIN](#)

