



FERRULE VI SINH INOX 304/316 TIÊU CHUẨN DIN

Products

Brand

Body Material

Finishing

Size

DIN FERRULE ADAPTER

CSE

Stainless Steel 304 or 304L, 316 & 316L

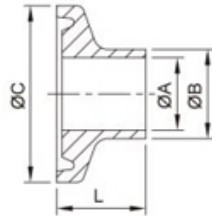
Ra $\leq 0.4\mu\text{m}$ as machine

ISO 1/4" ~ 8", DIN DN6 ~ DN200

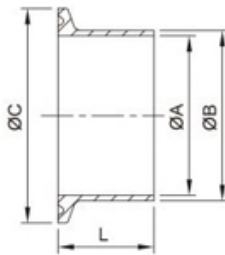
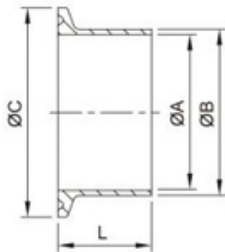


Ferrule Adapter

1/2"~3/4"



1.0"~12"



3A/SMS Welding Ferrule

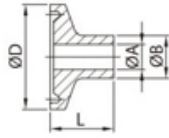
SIZE	ØA	ØB	ØC	14WMP	14MMP	14AMP
				L	L	L
1/4"	3.9	6.35	25	12.7	21.5	28.6
1/2"	9.4	12.7	25	12.7	21.5	28.6
DN15	9.7	12.7	25.4	12.7	21.5	28.6
3/4"	15.75	19.05	25	12.7	21.5	28.6
DN20	15.95	19.05	25.4	12.7	21.5	28.6
1"	22.1	25.4	50.5	12.7	21.5	28.6
DN25	22.5	25	50.5	—	21.5	28.6
1.25"	28.45	31.75	50.5	12.7	21.5	28.6
1.5"	34.8	38.1	50.5	12.7	21.5	28.6
DN38	35.5	38.1	50.5	—	21.5	28.6
2.0"	47.5	50.8	64	12.7	21.5	28.6
DN51	48.5	51	64	—	21.5	28.6
2.5"	60.2	63.5	77.5	12.7	21.5	28.6
DN63.5	60.5	63.5	77.5	—	21.5	28.6
DN76	72.9	76.1	91	—	21.5	28.6
3.0"	72.9	76.2	91	12.7	21.5	28.6
DN104	100	104	119	—	21.5	28.6
4.0"	97.4	101.6	119	15.8	21.5	28.6
6.0"	146.86	152.5	166.87	—	21.5	28.6 or 38.1
8.0"	197.66	203.3	217.67	—	21.5	28.6 or 38.1
10"	247.2	254	268.47	—	21.5	28.6 or 38.1
12"	298	304.8	319.27	—	21.5	28.6 or 38.1

DIN Ferrule

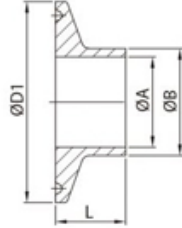
SIZE	DA		DB		ØC	L
	ØA	ØB	ØA	ØB		
DN6	6	8	—	—	34	12.7
DN8	8	10	—	—	34	12.7
DN10	10	13	9	12	34	18
DN15	16	19	15	18	34	18
DN20	20	23	19	22	34	18
DN25	26	29	25	28	50.5	21.5
DN32	32	35	31	34	50.5	21.5
DN40	38	41	37	40	50.5	21.5
DN50	50	53	49	52	64	21.5
DN65	66	70	66	70	91	28
DN80	81	85	81	85	106	28
DN101.6	—	—	97.6	101.6	119	28
DN100	100	104	100	104	119	28
DN125	125	129	125	129	155	28
DN150	150	154	150	154	183	28
DN200	200	204	200	204	233.5	28

Ferrule Adapter

DN6~DN10 (DIN32676)

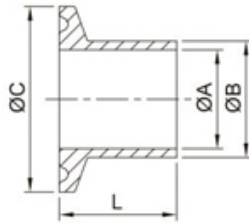


DN15~DN200 (DIN32676)
DN8~DN200



ISO Ferrule

SIZE	ØA	ØB	ØD	ØD1	L
DN6	7	10.2	25	—	12.7
DN8	10.3	13.5	25	34	12.7
DN10	14	17.2	25	34	12.7
DN15	18.1	21.3	50.5	34	21.5
DN20	23.7	26.9	50.5	50.5	21.5
DN25	30.5	33.7	50.5	50.5	21.5
DN32	39.2	42.4	50.5	50.5	21.5
DN40	45.1	48.3	64	64	21.5
DN50	56.3	60.3	77.5	77.5	28
DN65	72.1	76.1	91	91	28
DN80	84.9	88.9	106	106	28
DN100	109.1	114.3	130	130	28
DN125	133.7	139.7	155	155	28
DN150	162.3	168.3	183	183	28
DN200	211.1	219.1	233.5	233.5	28



14MPW Heavy Tank Ferrule

SIZE	ØA	ØB	ØC	L
1/2"	8.15	12.75	25.2	54
3/4"	14.6	19.05	25.2	54
1.0"	22.1	29.5	50.5	41.3
1.5"	34.8	42.6	50.5	41.3
2.0"	47.5	55.7	64	44.5
2.5"	60.2	68.8	77.5	44.5
3.0"	72.9	81.9	91	46.1
4.0"	97.4	108.1	119	54
6.0"	146.25	157.3	166.87	63.5
8.0"	197.05	208.1	217.67	63.5

Sản phẩm khác



—

[VAN BƯỚM VI SINH TAY GẠT HÀN](#)

[Xem thêm VAN BƯỚM VI SINH TAY GẠT HÀN](#)



—

[VAN BƯỚM VI SINH INOX TAY RÚT NỐI HÀN TIÊU CHUẨN SMS](#)

[Xem thêm VAN BƯỚM VI SINH INOX TAY RÚT NỐI HÀN TIÊU CHUẨN SMS](#)



—

[VAN BUỒM VI SINH INOX TAY RÚT NỐI HÀN TIÊU CHUẨN DIN](#)

[Xem thêm VAN BUỒM VI SINH INOX TAY RÚT NỐI HÀN TIÊU CHUẨN DIN](#)



—

[RẮC CO VI SINH INOX 304/316 TIÊU CHUẨN SMS](#)

[Xem thêm RẮC CO VI SINH INOX 304/316 TIÊU CHUẨN SMS](#)



—

[BẦU ĐỒNG TÂM VI SINH TIÊU CHUẨN DIN](#)

[Xem thêm BẦU ĐỒNG TÂM VI SINH TIÊU CHUẨN DIN](#)



—

[BẦU LỆCH TÂM VI SINH TIÊU CHUẨN DIN](#)

[Xem thêm BẦU LỆCH TÂM VI SINH TIÊU CHUẨN DIN](#)