

## **MẶT BÍCH RỘNG THÉP JIS ,PN16**

**MÃ SẢN PHẨM**

**SP- 39**

**TÊN SẢN PHẨM**

**MẶT BÍCH RỘNG THÉP ĐÚC SS400 JIS 5K  
B2220**

Loại Bích

Bích rộng mặt phẳng (FF), Nâng cao mặt (RF)

Chất Liệu

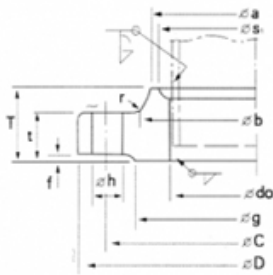
Thép đúc áp lực -Forged Carbon Steel SS 400 - SF  
440A

Tiêu Chuẩn	JIS B2220-1984 - KS B1503-1985
Áp Lực	JIS 5k ~ JIS 10k ~ JIS 20k ~ JIS 20k ~ JIS 30k ~ JIS 40k ~ JIS 63K
Kích Cỡ	DN 15A → DN 1200A ~ (½" inch → 48" inch) ~ (22.2 mm → 1227 mm)
Sử Dụng	Nước, nước thải, hơi nóng, khí nén, gas, xăng, dầu,...
Tình Trạng	Hàng có sẵn, mới 100%
Xuất Xứ	Trung Quốc, Đài Loan, Việt Nam
Đơn Giá	Xin liên hệ

# 20K KS B1503 JIS B2220

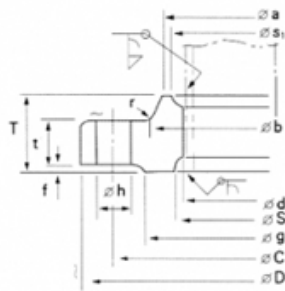
## TYPE A

NOMINAL SIZE 10-50 mm



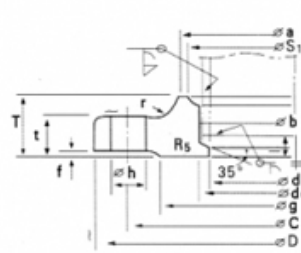
## TYPE B

NOMINAL SIZE 10-50 mm



## TYPE C

NOMINAL SIZE 65-600 mm



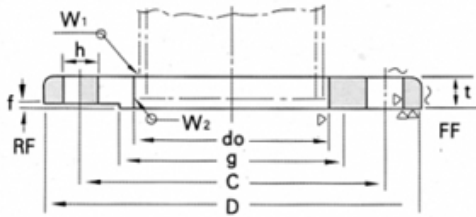
\*The surface finish (~) is in the case of die forging

Unit:mm

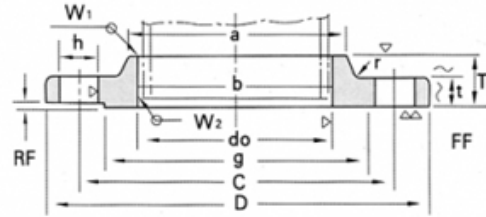
Nominal Dia. of Flange	Outside Dia. of Flange D	Sectional Dimensions of Flange													Reference					Approx. Weight (kg)	
		Bolt Circle Dia. C	Dia. of Raised Face g	Inside Dia. of Flange do	Outside Dia. of Steel Pipe	t	T	Dia. of Hub		Radius r	f	d	Number of Bolt Holes	Hole Dia. h	Nominal Bolt Size	s <sub>1</sub>	m	s <sub>2</sub>	n		l
								a	b												
10	90	65	46	17.8	17.3	14	20	30	32	4	1	-	4	15	M12	27	4	27	4	-	0.59
15	95	70	51	22.2	21.7	14	20	34	36	4	1	-	4	15	M12	31	4	31	4	-	0.65
20	100	75	56	27.7	27.2	16	22	40	42	4	1	-	4	15	M12	37	4	37	4	-	0.81
25	125	90	67	34.5	34.0	16	24	48	50	4	1	-	4	19	M16	44	4	44	4.5	-	1.29
32	135	100	76	43.2	42.7	18	26	56	60	5	2	-	4	19	M16	52	4	53	5	-	1.60
40	140	105	81	49.1	48.6	18	26	62	66	5	2	-	4	19	M16	58	4	59	5.5	-	1.69
50	155	120	96	61.1	60.5	18	26	76	80	5	2	-	8	19	M16	70	4	72	5.5	-	1.89
65	175	140	116	77.7	76.3	20	30	100	104	5	2	65.9	8	19	M16	94	6	-	-	6	2.60
80	200	160	132	90	89.1	22	34	113	117	6	2	78.1	8	23	M20	107	6	-	-	6	3.93
(90)	210	170	145	102.6	101.6	24	36	126	130	6	2	90.2	8	23	M20	120	6	-	-	6	4.56
100	225	185	160	115.4	114.3	24	36	138	142	6	2	102.3	8	23	M20	132	6	-	-	6	5.13
125	270	225	195	141.2	139.8	26	40	166	172	6	2	126.6	8	25	M20	160	7	-	-	6	8.30
150	305	260	230	166.6	165.2	28	42	196	202	6	2	151.0	12	25	M22	186	8	-	-	6	10.6
200	350	305	275	218.0	216.3	30	46	244	252	6	2	199.9	12	25	M22	273	9	-	-	6	13.3
250	430	380	345	269.5	267.4	34	52	304	312	6	2	248.8	12	27	M24	290	10	-	-	6	23.4
300	480	430	395	321.0	318.5	36	56	354	364	8	3	297.9	16	27	M24	345	11	-	-	6	27.7
350	540	480	440	358.1	355.6	40	62	398	408	8	3	333.4	16	33	M30 × 3	384	12	-	-	6	39.2
400	605	540	495	409.0	406.4	46	70	446	456	10	3	381.0	16	33	M30 × 3	437	13	-	-	7	54.2
450	675	605	560	460.0	457.2	48	78	504	514	10	3	431.8	20	33	M30 × 3	490	15	-	-	7	71.7
500	730	660	615	511.0	508.0	50	84	558	568	10	3	482.6	20	33	M30 × 3	544	16	-	-	7	86.2
(550)	795	720	670	562.0	558.2	52	90	612	622	10	3	533.4	20	39	M36 × 3	595	16	-	-	7	105
600	845	770	720	613.0	609.6	54	96	666	676	10	3	584.2	24	39	M36 × 3	646	18	-	-	7	119
*650	945	850	790	664	660.4	60					5		24	48	M45 × 3						
*700	995	900	840	715	711.2	64					5		24	48	M45 × 3						
*750	1080	970	900	766	762.0	68					5		24	56	M52 × 3						
*800	1140	1030	960	817	812.8	72					5		24	56	M52 × 3						
*850	1200	1090	1020	868	863.6	74					5		24	56	M52 × 3						
*900	1250	1140	1070	919	914.4	76					5		28	56	M52 × 3						

# 5K KS B1503 JIS B2220

**NOMINAL SIZE 10-400 mm**



**NOMINAL SIZE 450-1000 mm**



Unit:mm

Nominal Dia. of Flange	Sectional Dimensions of Flange													Welding		Weight (kg)	
	Outside Dia. of Flange D	Dia. of Bolt Circle C	Dia. of Raised Face g	Inside Dia. of Flange do	Outside Dia. of Applicable Pipe	t	T	Dia. of Hub		Radius r	Raised Face	Hole Dia. h	Number of Bolt Holes	Nominal Bolt Size	W <sub>1</sub>		W <sub>2</sub>
								a	b								
(10)	75	55	39	17.8	17.3	9	-	-	-	-	1	12	4	M10	5.0	2.5	0.27
15	80	60	44	22.2	21.7	9	-	-	-	-	1	12	4	M10	5.0	3.0	0.30
(20)	85	65	49	27.7	27.2	10	-	-	-	-	1	12	4	M10	5.0	3.0	0.37
25	95	75	59	34.5	34.0	10	-	-	-	-	1	12	4	M10	5.0	3.0	0.45
(32)	115	90	70	43.2	42.7	12	-	-	-	-	2	15	4	M12	6.0	3.0	0.78
40	120	95	75	49.1	48.6	12	-	-	-	-	2	15	4	M12	6.0	3.0	0.83
50	130	105	85	61.1	60.5	14	-	-	-	-	2	15	4	M12	6.0	3.0	1.07
65	155	130	110	77.1	76.3	14	-	-	-	-	2	15	4	M12	6.0	4.0	1.49
80	180	145	121	90.0	89.1	14	-	-	-	-	2	19	4	M16	6.0	4.0	1.99
(90)	190	155	131	102.6	101.6	14	-	-	-	-	2	19	4	M16	6.0	4.0	2.09
100	200	165	141	115.4	114.3	16	-	-	-	-	2	19	8	M16	7.0	4.0	2.39
125	235	200	176	141.2	139.8	16	-	-	-	-	2	19	8	M16	7.0	4.0	3.23
150	265	230	206	166.6	165.2	18	-	-	-	-	2	19	8	M16	7.0	5.0	4.41
(175)	300	260	232	192.1	190.7	18	-	-	-	-	2	23	8	M20	7.5	5.0	5.51
200	320	280	252	218.0	216.3	20	-	-	-	-	2	23	8	M20	8.5	6.0	6.33
(225)	345	305	277	243.7	241.8	20	-	-	-	-	2	23	12	M20	9.0	6.0	6.64
250	385	345	317	269.5	267.4	22	-	-	-	-	2	23	12	M20	10.0	6.0	9.45
300	430	390	360	321.0	318.5	22	-	-	-	-	3	23	12	M20	10.0	6.0	10.30
350	480	435	403	358.1	355.6	24	-	-	-	-	3	25	12	M22	12.0	7.0	14.00
400	540	495	463	409.0	406.4	24	-	-	-	-	3	25	16	M22	12.0	7.0	16.90
450	605	555	523	460.0	457.2	24	40	495	500	5	3	25	16	M22	12.0	7.0	24.80
500	655	605	573	511.0	508.0	24	40	546	552	5	3	25	20	M22	12.0	7.0	26.90
550	720	665	630	562.0	558.8	26	42	597	603	5	3	27	20	M24	12.0	7.0	34.10
600	770	715	680	613.0	609.6	26	44	648	654	5	3	27	20	M24	12.0	7.0	37.50
650	825	770	735	664.0	660.4	26	48	702	708	5	3	27	24	M24	12.0	7.0	42.80
700	875	820	785	715.0	711.2	26	48	751	758	5	3	27	24	M24	12.0	7.0	45.40
750	945	880	840	766.0	762.0	28	52	802	810	5	3	33	24	M30	12.0	7.0	57.40
800	995	930	890	817.0	812.8	28	52	854	862	5	3	33	24	M30	13.0	8.0	60.80
850	1045	980	940	868.0	863.6	28	54	904	912	5	3	33	24	M30	13.0	8.0	63.50
900	1095	1030	990	919.0	914.4	30	56	956	964	5	3	33	24	M30	13.0	8.0	75.30
1000	1195	1130	1090	1021.0	1016.0	32	60	1058	1066	5	3	33	28	M30	14.0	9.0	88.50
*(1100)	1305	1240	1200	1123.0	1117.6	32	-	-	-	-	3	33	28	M30			
*1200	1420	1350	1305	1225.0	1219.2	34	-	-	-	-	3	33	32	M30			
*1350	1575	1505	1460	-	1371.6	34	-	-	-	-	3	33	32	M30			
*1500	1730	1660	1615	-	1524.0	36	-	-	-	-	3	33	36	M30			

## Sản phẩm khác



—

### [RẮC CO REN THÉP RÈN A105](#)

[Xem thêm RẮC CO REN THÉP RÈN A105](#)



—

### [CÀ RÁ REN ÁP LỰC INOX 304L](#)

[Xem thêm CÀ RÁ REN ÁP LỰC INOX 304L](#)



---

## [MẶT BÍCH RỘNG INOX 304](#)

[Xem thêm MẶT BÍCH RỘNG INOX 304](#)



---

## [MẶT BÍCH INOX 304](#)

[Xem thêm MẶT BÍCH INOX 304](#)



—

## [MẶT BÍCH MÙ THÉP SS400 DIN 2527 PN40](#)

[Xem thêm MẶT BÍCH MÙ THÉP SS400 DIN 2527 PN40](#)



—

## [MẶT BÍCH CỔ INOX 304 ANSI CLASS 150 LBS](#)

[Xem thêm MẶT BÍCH CỔ INOX 304 ANSI CLASS 150 LBS](#)