



MẶT BÍCH RỘNG THÉP

MÃ SẢN PHẨM

SP - 36

TÊN SẢN PHẨM

**MẶT BÍCH RỘNG THÉP ĐÚC SS400 JIS 30K
B2220**

Loại Bích

Bích rộng mặt phẳng SOP (FF), nâng cao mặt SOH (RF)

Chất Liệu

Thép đúc áp lực-Forged Carbon Steel SS 400 - SF 440A

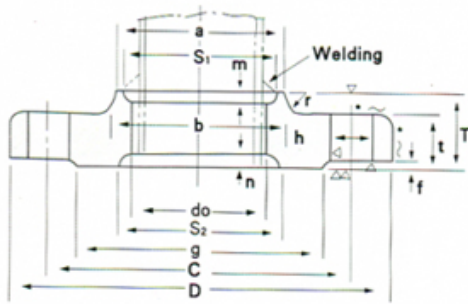
Tiêu Chuẩn	JIS 30K B2220 -1984 - KS B1503 -1985
Áp Lực	JIS 16K ~ 20K ~ 30K ~ 40K ~ 63K
Kích Cỡ Từ	DN 15A → DN 400A ~ (1/2" inch → 16" inch) ~ (22.2 mm → 409 mm)
Sử Dụng	Nước, nước thải, hơi nóng, khí nén, gas, xăng, dầu,...
Tình Trạng	Hàng có sẵn, mới 100%
Xuất Xứ	Trung Quốc, Đài Loan, Việt Nam
Đơn Giá	Xin liên hệ

30K KS B1503 JIS B2220

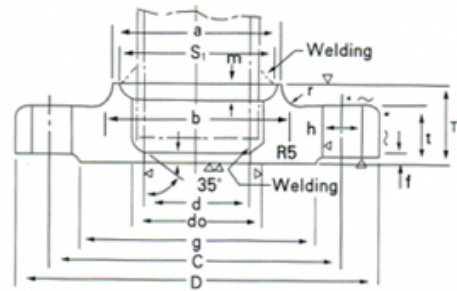
Slip-On

NOMINAL SIZE 10-50mm(TYPE B)

NOMINAL SIZE 65-400mm(TYPE C)



*The surface finish (~) is in the case of die forging

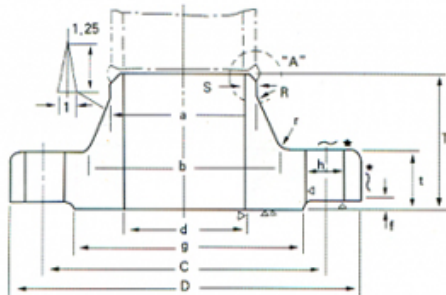


Unit:mm

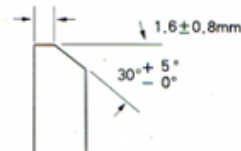
Nominal Dia. of Flange	Outside Dia. of Flange D	Sectional Dimensions of Flange											Reference					Approx. Weight (kg)			
		Bolt Circle Dia. C	Dia. of Raised Face g	Inside Dia. of Flange do	Outside Dia. of Steel Pipe	t	T	Dia. of Hub		Ra-dius r	f	d	Number of Bolt Holes	Hole Dia. h	Nominal Bolt Size	s ₁	m		s ₂	n	l
								a	b												
10	110	75	52	17.8	17.3	16	24	30	34	4	1	-	4	19	M16	-	-	-	-	-	0.99
15	115	80	55	22.2	21.7	18	26	36	40	5	1	-	4	19	M16	31	4	40	5	-	1.23
20	120	85	60	27.7	27.2	18	28	42	46	5	1	-	4	19	M16	37	5	44	5	-	1.34
25	130	95	70	34.5	34.0	20	30	50	54	5	1	-	4	19	M16	55	6	52	5	-	1.76
32	140	105	80	43.2	42.7	22	32	60	64	6	2	-	4	19	M16	52	6	60	5	-	2.15
40	160	120	90	49.1	48.6	22	34	66	70	6	2	-	4	23	M20	58	6	66	5	-	2.82
50	165	130	105	61.1	60.5	22	36	82	86	6	2	-	8	19	M16	70	6.5	78	5	-	2.89
65	200	160	130	77.1	76.3	26	40	102	106	8	2	65.9	8	23	M20	96	9.5	94	5	6	4.70
80	210	170	140	90.0	89.1	28	44	115	121	8	2	78.1	8	23	M20	109	9.5	-	-	6	5.36
(90)	230	185	150	102.6	101.6	30	46	128	134	8	2	90.2	8	25	M22	122	9.5	-	-	6	6.85
100	240	195	160	115.4	114.3	32	48	141	147	8	2	102.3	8	25	M22	135	9.5	-	-	6	7.89
125	275	230	195	141.2	139.8	36	54	166	172	8	2	126.6	8	25	M22	160	9.5	-	-	6	11.4
150	325	275	235	166.6	165.2	38	58	196	204	8	2	151.0	12	27	M24	186	9.5	-	-	6	16.7
200	370	320	280	218.0	216.3	42	64	248	256	8	2	199.9	12	27	M24	237	9.5	-	-	6	20.6
250	450	390	345	269.5	267.4	48	72	306	314	10	2	248.8	12	22	M30	290	10	-	-	6	36.1
300	515	450	405	321.0	318.5	52	78	360	370	10	3	297.9	16	33	M30	345	12	-	-	6	49.9
350	560	495	450	358.1	355.6	54	84	402	412	12	3	333.4	16	33	M30	383	13	-	-	6	61.2
400	630	560	510	409.0	406.4	60	92	456	468	15	3	381.0	16	39	M36	435	14	-	-	7	85.2

30K KS B1503 JIS B2220

Welding Neck



DETAIL " A "



*The surface finish (~) shown above is in the case of die forging.

When particularly necessary, customers can order another beveling form than the above.

Unit:mm

Nominal Dia. of Flange	Outside Dia. of Flange D	Sectional Dimensions Flange														Nominal Bolt Size	Approx Weight (kg)
		Bolt Dia. C	Dia. of Raised Face g	Outside Dia. of Steel Pipe	T	b	a	R	t	d	Radius r	S	f	Number of Bolt Holes	Dia of Hole h		
15	115	80	55	21.7	45	40	22.0	20	18	15.8	6	3.1	1	4	19	M16	1.33
20	120	85	60	27.2	45	44	27.5	20	18	21.1	6	3.2	1	4	19	M16	1.47
25	130	95	70	34.0	48	52	34.4	20	20	26.8	6	3.8	1	4	19	M16	1.95
32	140	105	80	42.7	52	62	43.1	30	22	35.1	6	4.0	2	4	19	M16	2.43
40	160	120	90	48.6	54	70	49.1	30	22	40.7	6	4.2	2	4	23	M20	3.16
50	165	130	105	60.5	57	84	61.0	30	22	52.2	8	4.4	2	8	19	M16	3.33
65	200	160	150	76.3	69	105	76.9	30	26	65.3	8	5.8	2	8	23	M20	5.91
80	210	170	140	89.1	73	118	89.7	30	28	76.4	8	6.1	2	8	23	M20	7.05
(90)	230	185	150	101.6	74	130	102.3	30	30	89.5	8	6.4	2	8	25	M22	8.54
100	240	195	160	114.3	76	142	115.1	30	32	101.5	8	6.8	2	8	25	M22	9.72
125	275	230	195	139.8	86	172	140.7	50	36	125.7	10	7.5	2	8	25	M22	14.4
150	325	275	235	165.2	95	202	166.2	50	38	150.0	10	8.1	2	12	27	M24	20.6
200	370	320	280	216.3	102	254	217.5	50	42	198.7	10	9.4	2	12	27	M24	28.7
250	450	390	345	267.4	118	312	268.7	50	48	247.5	12	10.6	2	12	33	M30 × 3	47.3
300	515	450	405	318.5	127	366	320.0	50	52	296.4	15	11.8	3	16	33	M30 × 3	62.8
350	560	495	450	355.6	134	406	357.2	80	84	331.8	15	12.7	3	16	33	M30 × 3	77.0
400	630	560	510	406.4	149	462	408.3	80	60	379.1	20	14.6	3	16	39	M30 × 3	108.0

Sản phẩm khác



—

[RẮC CO REN THÉP RÈN A105](#)

[Xem thêm RẮC CO REN THÉP RÈN A105](#)



—

[CÀ RÁ REN ÁP LỰC INOX 304L](#)

[Xem thêm CÀ RÁ REN ÁP LỰC INOX 304L](#)



—

[MẶT BÍCH RỘNG INOX 304](#)

[Xem thêm MẶT BÍCH RỘNG INOX 304](#)



—

[MẶT BÍCH INOX 304](#)

[Xem thêm MẶT BÍCH INOX 304](#)



—

[MẶT BÍCH MÙ THÉP SS400 DIN 2527 PN40](#)

[Xem thêm MẶT BÍCH MÙ THÉP SS400 DIN 2527 PN40](#)



—

[MẶT BÍCH CỔ INOX 304 ANSI CLASS 150 LBS](#)

[Xem thêm MẶT BÍCH CỔ INOX 304 ANSI CLASS 150 LBS](#)

